



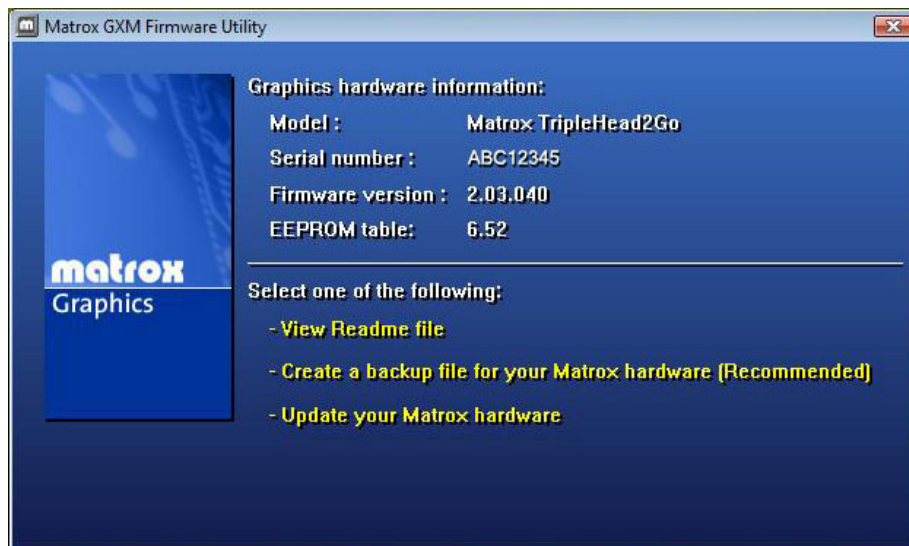
TripleHead2Go Digital Edition Widescreen Resolution Software Download

To access TripleHead2Go Digital Edition's new triple widescreen modes of 3x1680x1050, 3x1440x900 and 3x1366x768¹, you must download the latest firmware utility and PowerDesk software. Before downloading the software, please make sure that your system meets the following criteria:

1. Your system must have a dual-link DVI connector and must be running a Microsoft Windows® XP or Vista™ operating system (not Mac compatible).
2. Your graphics card should be a compatible DirectX® 10 GPU with the latest graphics driver version installed. To check, download the [GXM System Compatibility tool](#).

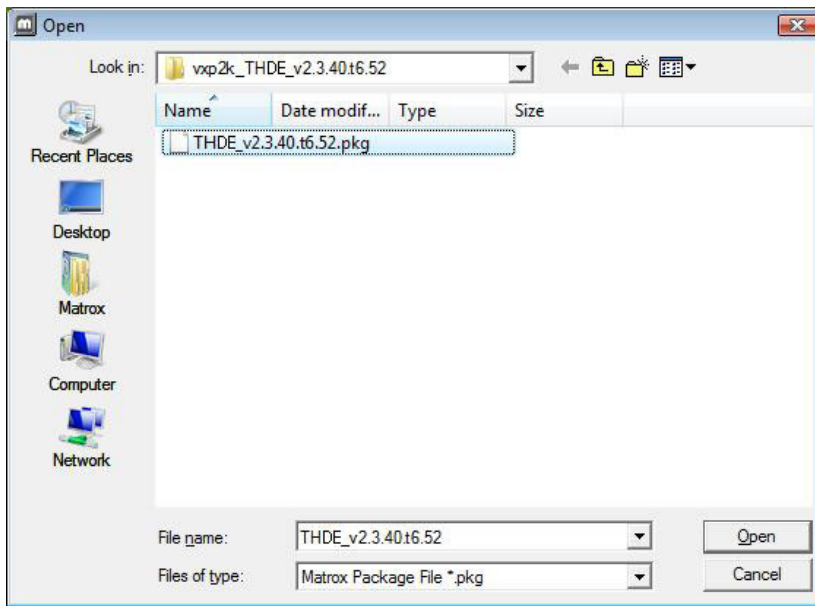
Download Instructions

1. Download latest Graphics eXpansion Module (GXM) [firmware utility](#).
2. Double-click on vxp2k_THDE_v2.3.40.t6.52.exe. A window opens.

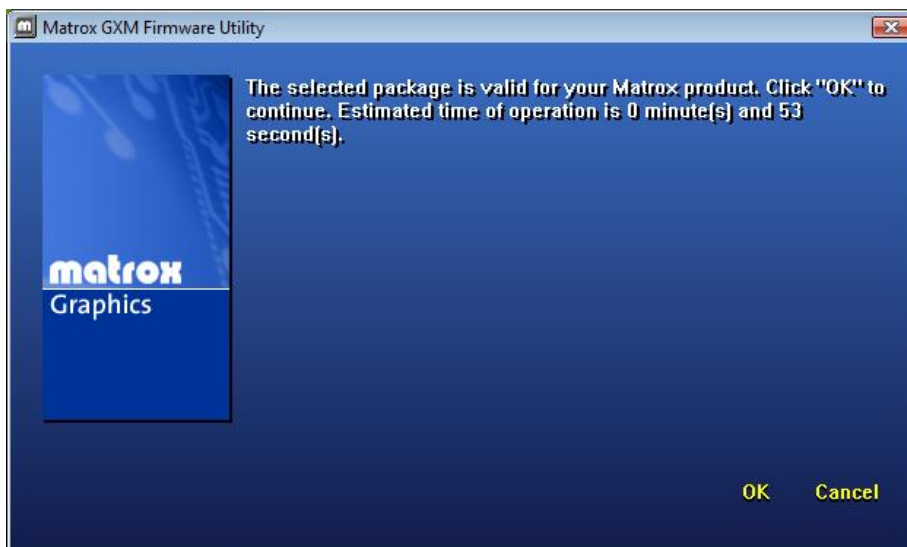


Note: The serial number, firmware version, and EEPROM table might be different on your Matrox unit.

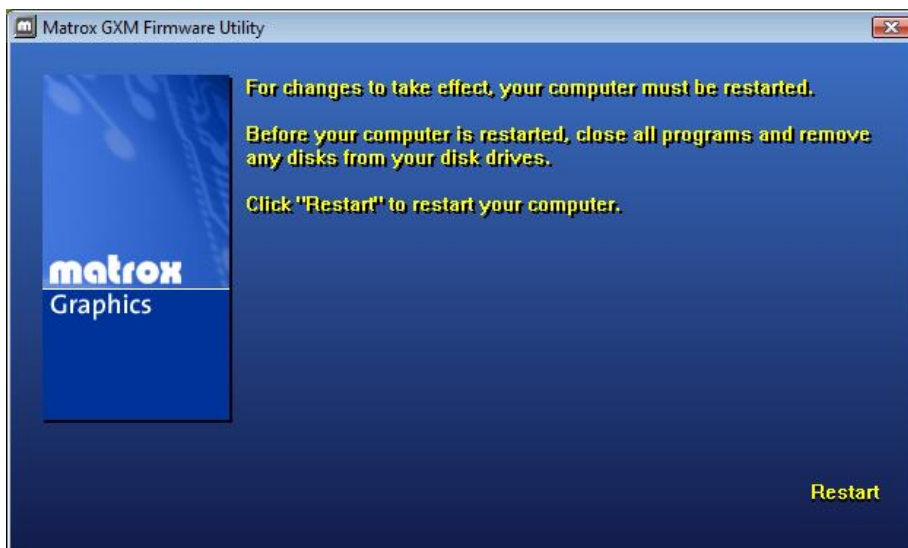
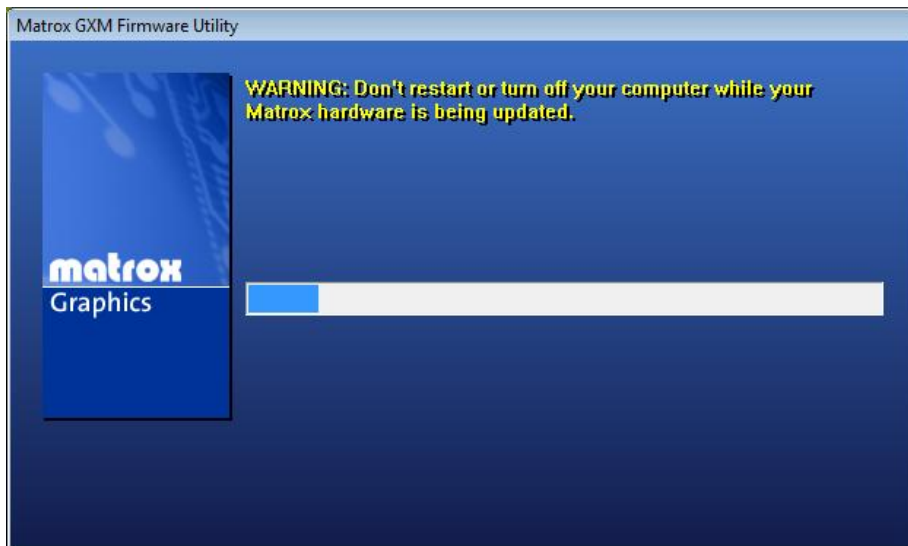
- 3) Click on "Update your Matrox hardware" and select the file **THDE_v2.3.40.t6.52.pkg**. Click "Open".



A confirmation window is displayed providing the estimated time for completion.

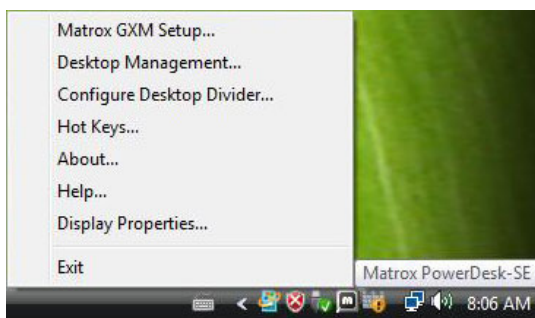


4) Click **OK** to continue. Wait for the progress bar to finish. You are asked to restart your system.

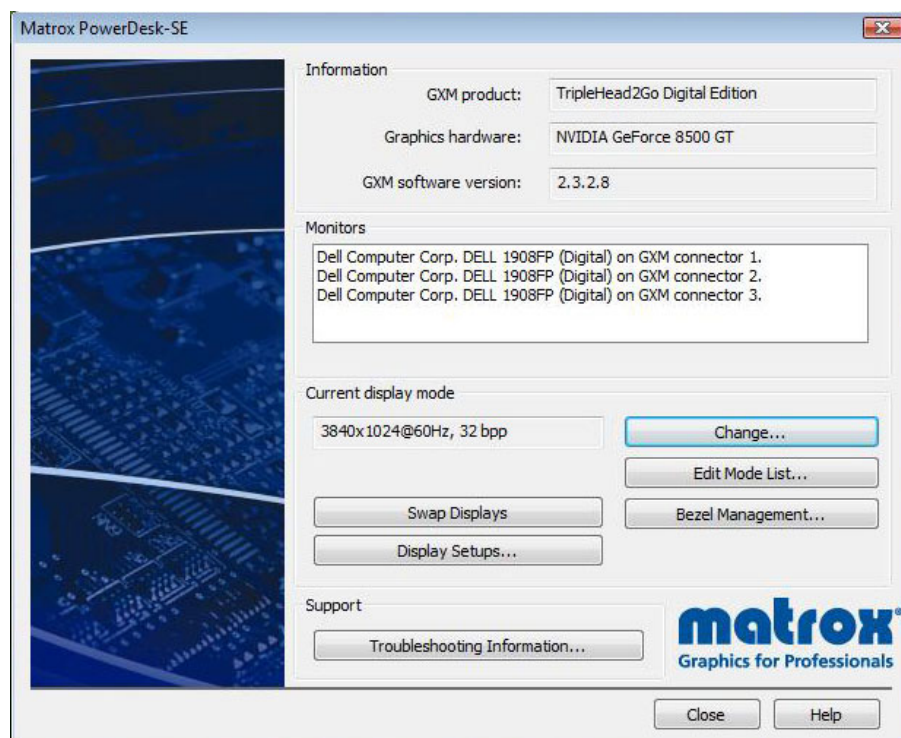


5) After rebooting your system, install the [GXM software suite 2.03.02](#) or later and reboot your system again.

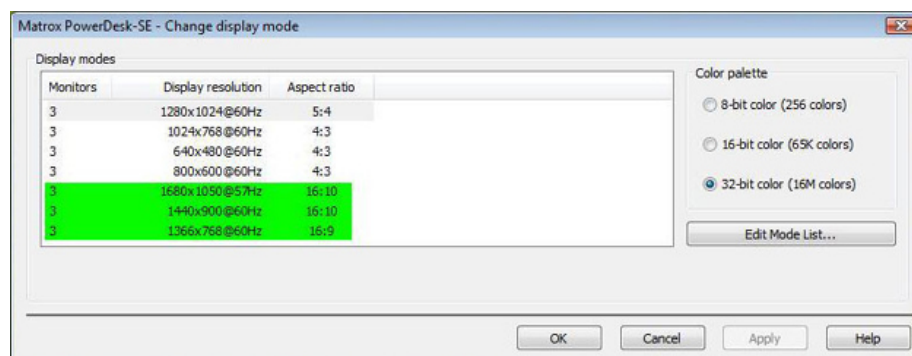
6) After rebooting your system, right-click on the **PowerDesk** icon and click "**Matrox GXM Setup**"



The main PowerDesk window appears.



7) Click on the "Change..." button under "Current display mode", where the following triple widescreen resolutions are displayed.



8) Select the resolution that is supported by your monitors and click "Apply".

You have successfully downloaded and installed the triple widescreen resolution software.

¹ Available only with certain NVIDIA® (triple 1440x900 and 1366x768 at 60Hz and 1680x1050 at 57Hz) and ATI™ (triple 1440x900 at 60Hz) GPUs.